

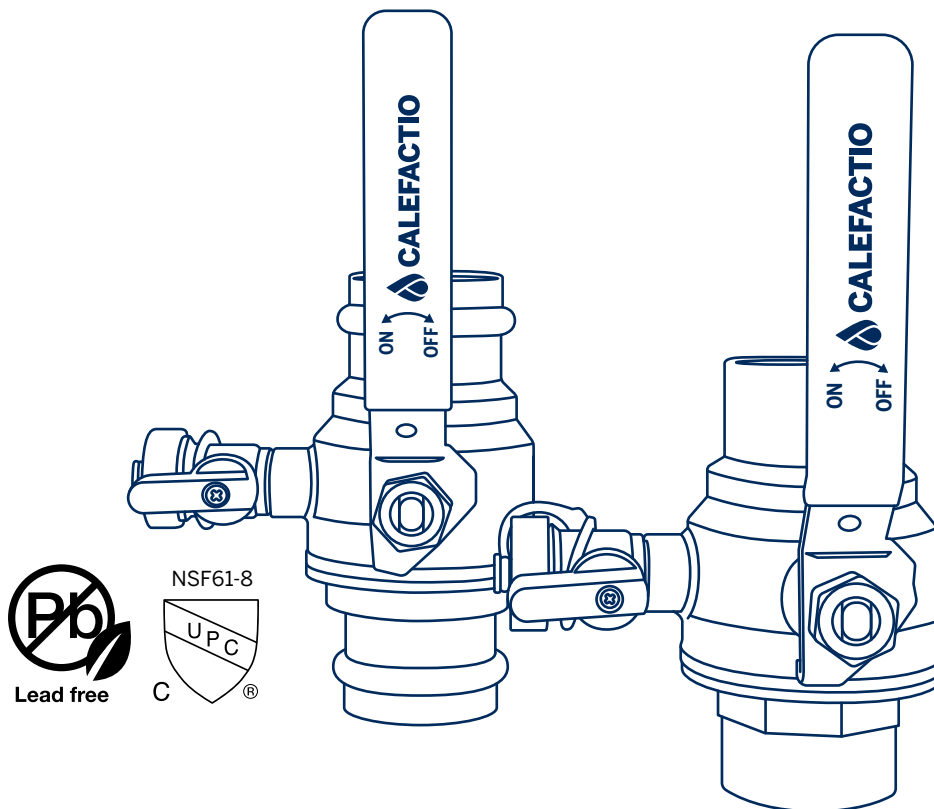


User Manual

# BALL VALVE WITH HIGH-FLOW DRAIN

## DESCRIPTION

Calefactio's new full port brass ball valves with high flow drain allow you to isolate and drain any part of a piped system. They simplify maintenance and service operations, enabling quick and efficient interventions.

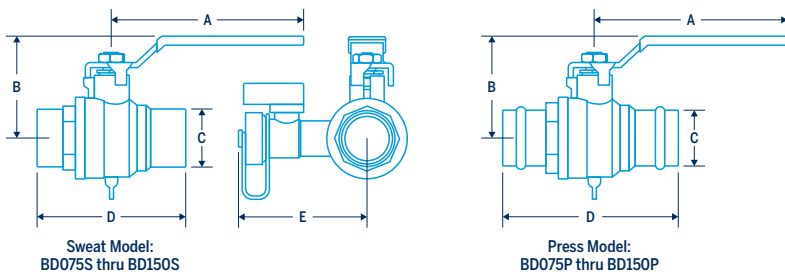


Scan the QR code to view the online version.



[calefactio.com](http://calefactio.com)

# BALL VALVE WITH HIGH-FLOW DRAIN



## TECHNICAL SPECIFICATIONS

- ▶ Full port brass valve
- ▶ High-flow drain
- ▶ Reversible handle
- ▶ Seat: PTFE
- ▶ O-ring: EPDM
- ▶ Connection: Sweat or Press, 3/4" to 1 1/2"
- ▶ Pressure rating: 250 CWP

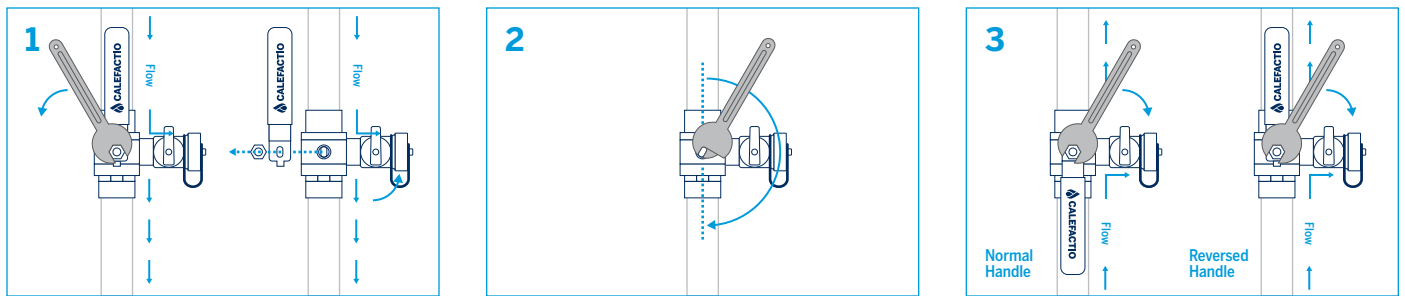
## SWEAT

Model#	Connect.	A		B		C		D		E		Weight	
		in	cm	in	cm	in	cm	in	cm	in	cm	lb	kg
BD075S	3/4"	3.7	9.5	1.9	4.9	0.9	2.2	3.8	9.7	2.7	6.8	1.0	0.4
BD100S	1"	4.3	11.0	2.3	5.9	1.1	2.9	4.1	10.5	2.9	7.4	1.3	0.6
BD125S	1 1/4"	5.1	13.0	2.7	6.9	1.4	3.5	4.6	11.7	3.1	7.9	2.0	0.9
BD150S	1 1/2"	5.1	13.0	3.0	7.5	1.6	4.1	5.2	13.1	3.3	8.4	2.9	1.3

## PRESS

Model#	Connect.	A		B		C		D		E		Weight	
		in	cm	in	cm	in	cm	in	cm	in	cm	lb	kg
BD075P	3/4"	3.7	9.5	1.9	4.9	0.9	2.3	2.8	7.1	2.7	6.8	1.0	0.5
BD100P	1"	4.3	11.0	2.3	5.9	1.1	2.9	3.3	8.5	2.9	7.4	1.4	0.6
BD125P	1 1/4"	5.1	13.0	2.7	6.9	1.4	3.5	3.9	9.8	3.1	7.9	2.1	1.0
BD150P	1 1/2"	5.1	13.0	3.0	7.5	1.7	4.2	4.4	11.2	3.3	8.4	2.9	1.3

## INSTALLATION



The Calefactio Ball valve can be swiftly reconfigured to the opposite side by simply removing the handle and rotating the stem 180 degrees, allowing for high-flow drainage from the other side of the ball.

1. Turn handle nut counter clockwise to loosen nut. Remove nut and handle.
2. Grab stem with wrench or pliers, turn stem 180°.
3. Replace handle in normal or reversed position. Replace and tighten nut.

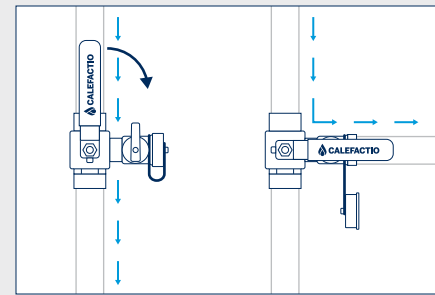
Quebec, Canada  
 T 450 951.0818  
 F 450 951.2165

[calefactio\\_solutions](#)  
[calefactio](#)  
[calefactio-solutions-inc](#)

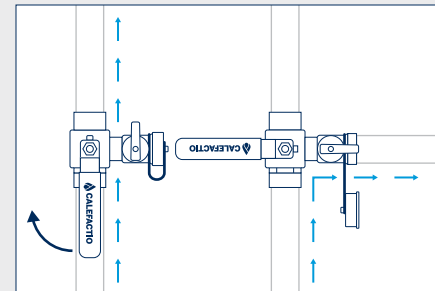
[calefactio.com](#)



## OPERATION



Draining from Above Ball



Draining from Below Ball